



# Complete EFB Solution

Visit [bytron.aero](https://bytron.aero)



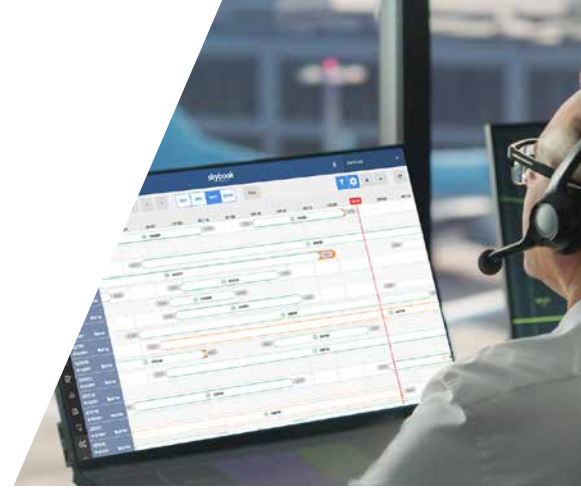
Streamlining workflows with integrated Dispatch, EFB & Flight Watch



# Ground Portal

The Ground Portal is an integrated flight data management system that includes essential tools for flight operations.

- Flight Dispatch
- Flight Tracking
- Airfield Watch
- NOTAM Watch
- Reporting & Analytics



# EFB

Our Electronic Flight Bag connects seamlessly with the Ground Portal to streamline pilot workflows and improve data capture.

- Digital Briefing
- Journey Log
- Form Builder
- Document Library
- Tools

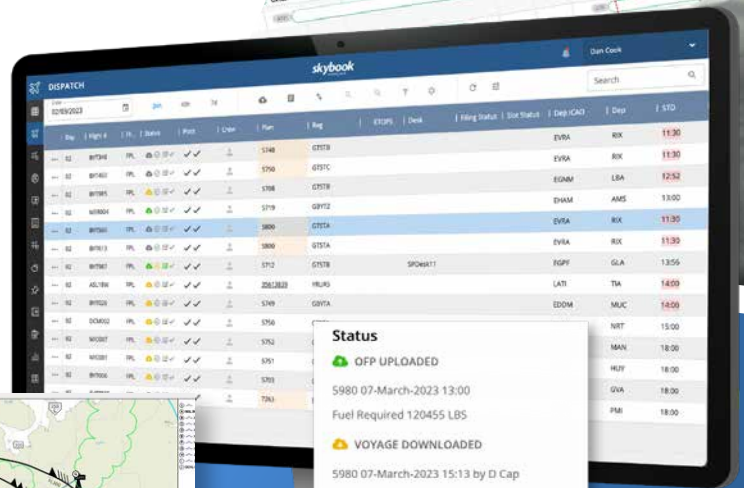


*"The highly configurable solution provides a useful tool for our pilots, as well as for our Flight Operations and Network Control teams"* Paul Smylie, Senior Manager, flydubai

# Flight Dispatch

Reduce workloads with all information in one portal, monitor flight progress and generate briefing packs.

- Streamline flight data management
- Over 2 million briefing packs a year are generated and released to the pilots EFB
- Review flight plans, Wx, NOTAMs & charts
- Receive alerts & message crew directly
- Identify potential delays with ops board view
- Update passenger and crew info
- Create notices & attach files to briefing packs such as loadsheets



**Status**

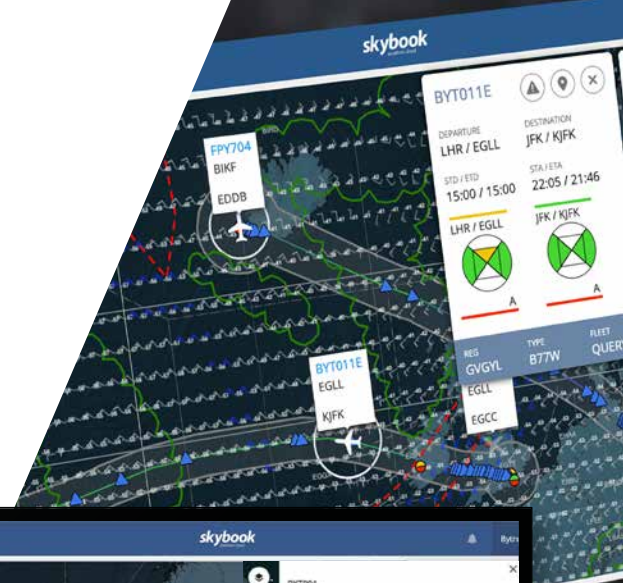
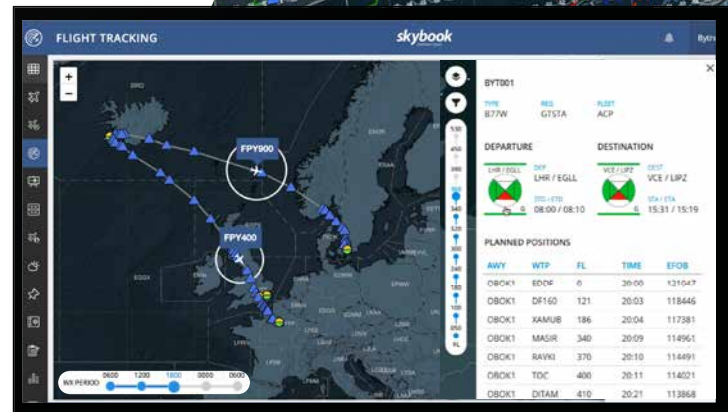
- OFF UPLOADED
- 5980 07-March-2023 13:00
- Fuel Required 120455 LBS
- VOYAGE DOWNLOADED
- 5980 07-March-2023 15:13 by D Cap
- SECTOR ACCEPTED
- PRE-FLIGHT SIGN OFF
- VOYAGE SIGNED OFF
- FUEL ORDERS

BYT985	FPL	🟡	🟢	🟢	🟢
MSR004	FPL	🟢	🟢	🟢	🟢
BYT560	FPL	🟡	🟢	🟢	🟢
BYT613	FPL	🟡	🟢	🟢	🟢

# Flight Tracking

Stay ahead of your aircraft with planned and actual positions, as well as deviation alerts for GADSS compliancy.

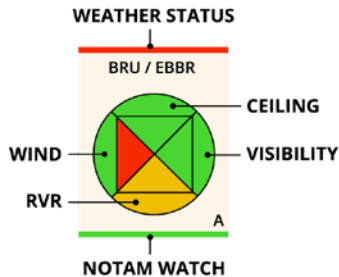
- View all flights or focus on a specific aircraft
- Position data taken from ACARS or ADS-B
- Upper wind & temperature and clear air turbulence
- Flight level, WX period & planned positions
- North Atlantic Tracks and Graticule
- Deviated aircraft alerts



# Airfield Watch

Improve awareness for your OCC teams, providing a quick and easy overview of changing weather conditions.


- Colour coded graphics for key weather data
- Airfields automatically added from flight plans
- Wx status changes based on your chosen minima
- Full access to METAR, TAF, SNOWTAM & NOTAM



# NOTAM Watch

Ensure the right people receive filtered critical & warning NOTAMs, improving safety awareness.

- Automatically filters irrelevant NOTAMs
- Filter by Q-Code, Series, Airfield, FIR, QFIR, Keyword
- Designate NOTAM alerts to specific people or teams



NOTAM

skybook  
aviation cloud

Exclusions E-Mail Rules **NOTAM Watch**

+ Add Subject

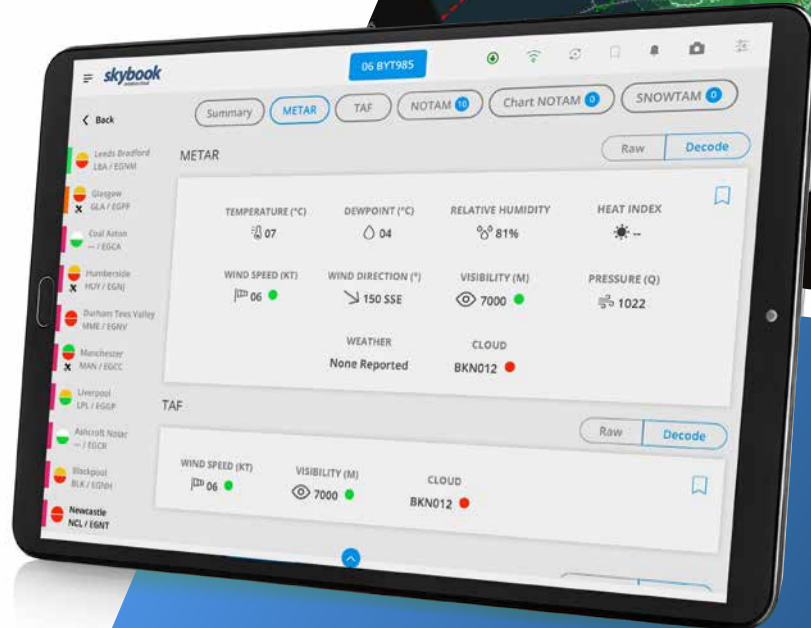
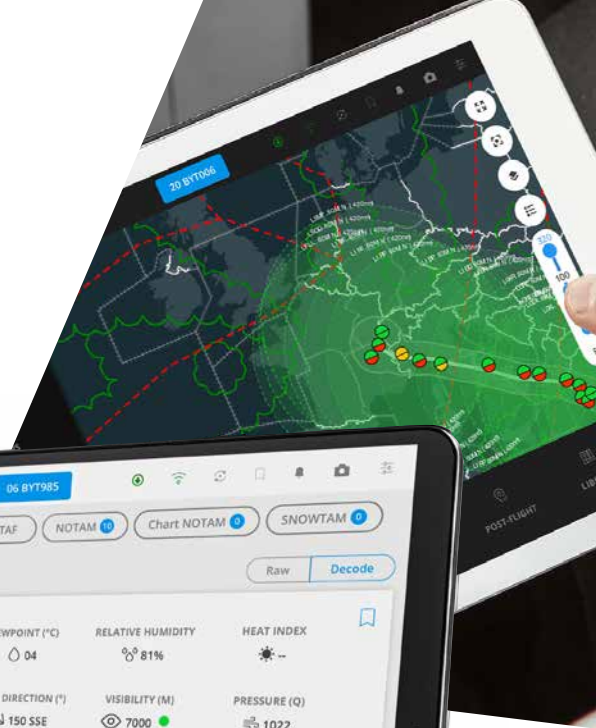
Drag a column header and drop it here to group by that column

QCode	Status	Description
AC	CRITICAL	CTR
AFAF	WARNING	FIR FLT CHECKED AND OKAY
FAHX	CRITICAL	AERODROME BIRD CONCENTR

# EFB Digital Briefing

Go paperless, reduce pilot workloads and access interactive OFP & weather maps with real-time data.

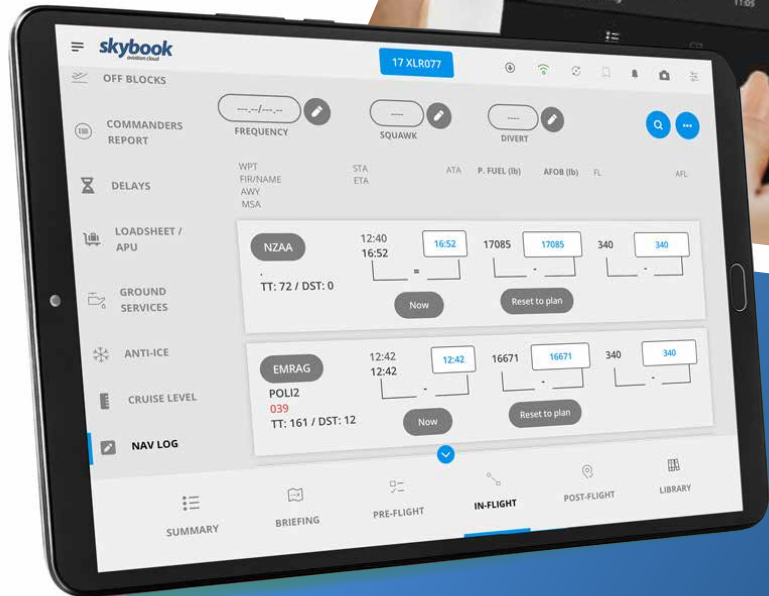
- Interactive OFP information
- METAR, TAF, Upper Wind & Temp Charts
- Airfield and FIR NOTAM
- Route plots and ETOPS Charts
- SigWX charts
- SIGMETS / ASHTAMS / Storms
- Notices & alerts



# EFB Journey Log

Streamlined data capture for each flight phase, and customisable to your operational requirements.

- Easily customise or hide fields
- Crewing and delays
- Fuel data & orders, de-icing
- Navigation log
- Ground Services, incident reports
- Integrated quick link apps



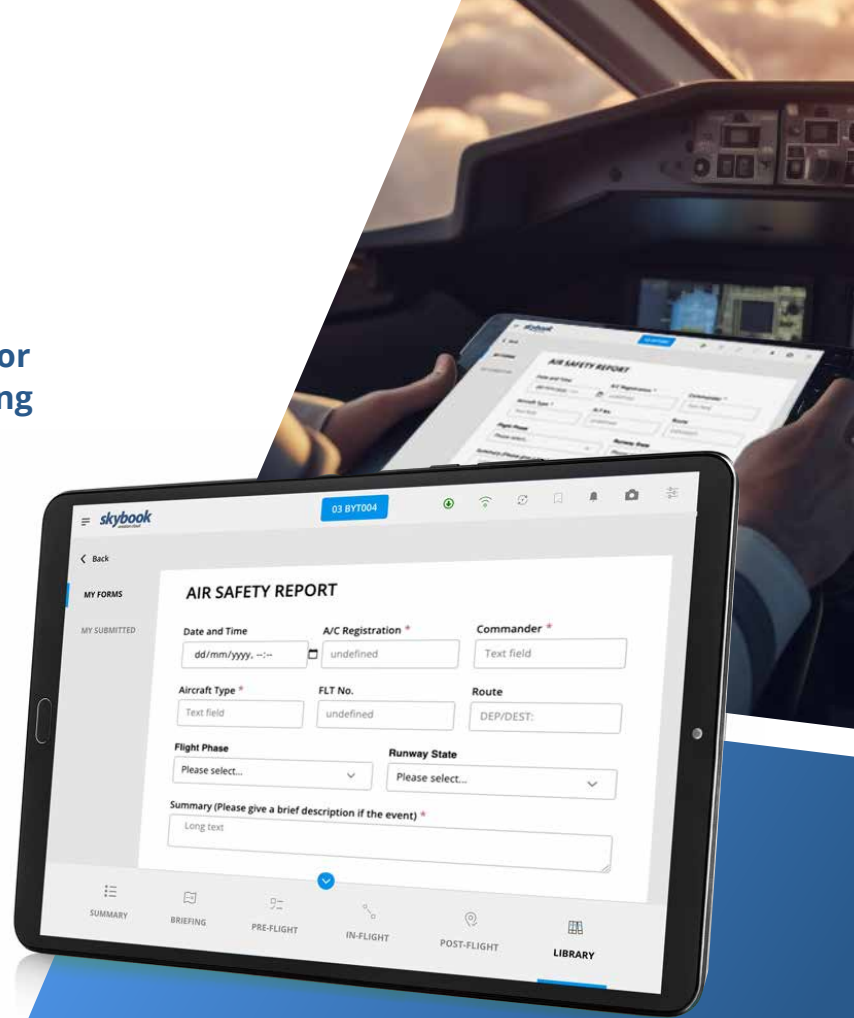


# Form Builder

Go paperless and create digital forms for the flight crew to complete, streamlining their workflow.

- Create digital forms and send straight to the EFB
- Reduce time delays in communication sharing
- Prepopulated information, requiring less input
- Automatically integrate form data with other systems via the skybook API
- Form data accessible in flight data storage

The screenshot shows the skybook Form Builder interface. It features two 'Short Text' form fields, each with a blue grid icon and a text input area. Below them is a 'Dropdown' form field, also with a blue grid icon and a dropdown menu. The interface is clean and modern, with a white background and blue accents.



# Document Library

Access all documents & aircraft manuals on the EFB. Send to entire fleets, certain aircraft, or specific flights

- Quicker access to specific documents
- No more bulky printed aircraft manuals
- File management for all aircraft
- Easily annotate, highlight and bookmark pages
- Manage version control and audit trail

Library > Aircraft > A330 ▾

Name	Owner	Last Modified
330-900	HJ - Captain	22-April-23 11:58 AM
330-300	JS - First Officer	08-May-23 17:12 PM
330-800	SD - Pilot	16-Feb-23 10:00 AM
330-200	AY - Chief Pilot	24-May-23 09:00 AM



# EFB Tools

Helpful tools for accurate and time saving flight crew calculations.


- Last minute change calculator
- See the impact on the weight & balance, without needing to generate a new loadsheet
- LMC limit warnings
- Add or remove changes to Passengers, Baggage, Hand Luggage and Cargo.
- Configurable for fleet or individual aircraft

Cargo Category

Category Name  
Baggage

Cargo Label  
Baggage

Cargo Weight  
20 kg



skybook  
06 BYT985

LMC CALCULATOR

CHANGES (MAX 9) 3

WEIGHT (KG) (MAX +500) +256

INDEX (MAX +3) -0.3

Passengers Baggage Hand Luggage Cargo

→ Move ✕ Remove + Add

Male + 1 +

Female + 1 +

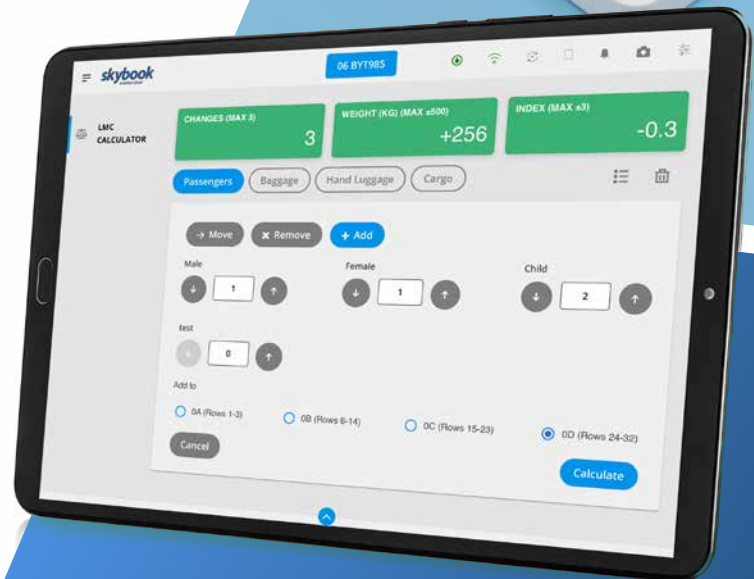
Child + 2 +

test 0 +

Add to

0A (Rows 1-3)  0B (Rows 6-14)  0C (Rows 15-23)  0D (Rows 24-32)

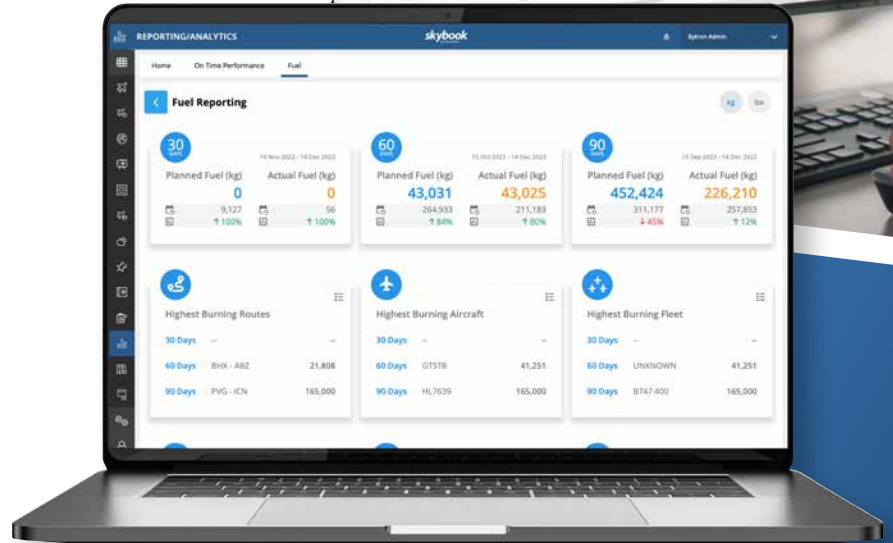
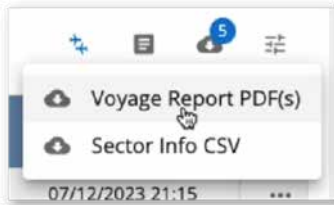
Cancel Calculate



# Reporting & Analytics

Examine post-flight data and historical flights. Identify trends and share reports to improve operational efficiency.

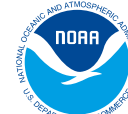
- Instantly access accurate flight data
- OTP and delay code analysis
- Fuel report data, Planned route vs actual
- Flight history data storage up to 5 years
- Comprehensive Flight summary data
- Download voyage reports, flight plans and flight tracking data



# Integrations

Connect seamlessly with your existing systems using our integration capabilities.

- Accepts ARINC633 EFF packages from all major Flight Planning Providers
- Works with proprietary OFP data from Sabre
- Recalls Crew Roster and Flight Schedule from AIMS, Blueone and PPS
- Allows airline to publish its own schedule
- Attach loadsheets, NOTOCs, GENDECs automatically
- Sends journey log data to other airline systems or third-parties
- Receives and publishes CTOT
- Integrates with FlightAware and ACARS for aircraft positions
- Integrates with JSI for Jeppesen OFPs and desk assignments
- Jeppesen HWS/WSI weather service integration
- Accepts MEL information from AMOS
- Integrates with the NavBlue RAIM service
- Retrieves Oceanic tracks via the Jeppesen bookshelf
- EUROCONTROL and Jeppesen NOTAM feeds
- UKMO and NOAA Weather feeds
- Sends sector status events to customer systems
- Integrates with 3rd Party EFBs such as AVIO & IFS
- Utilises IBM MQ, S/FTP and Web services
- Encrypted communications



# Our promise to you

We work closely with you to understand your operating processes, procedures and daily challenges. But most importantly to build an ongoing relationship that benefits your operations.

## Trusted by over 100 airlines

	SKYBOOK	OTHER SYSTEMS
Complete end-to-end solution	✓	✗
99.95% Uptime guarantee	✓	✗
24/7 Support, 365 days a year	✓	SOME
Fully integrated data management	✓	✗
Customer roadmap & user forum twice a year	✓	✗
Upfront, tailored pricing	✓	✗
Fortnightly catchup with dedicated account manager	✓	✗



Bytron Aviation Systems is certified with the ISO 27001 Information Security Management System and ISO 9001 Quality Management System.



Certified Management System



# Connecting the workflow of airlines

*“skybook represents a truly integrated approach that brings together market-leading functionality for the efficient management of flight data, crew briefing and monitoring operations.”*

Mathew Buettner - Director, Jeppesen Flight Planning & Dispatch

ISO 27001:2013 & ISO 9001:2015



info@bytron.aero

Visit **bytron.aero**